

www.vehicle-tracking.com

Miniature PenCam

User Manual

Introduction

This Hidden Camera Pen / Micro DVR can be used as a personal security video device, hidden spy camera for spying and surveillance, or it can be used to write your own personal video diary. With its compact size, it can be easily hidden or used as a daily writing instrument.



Features

- Dimension:150mm*15mm*15mm
- Weight: 2 oz
- Resolution: 640 X 480
- AVI Video format
- Standby current<=60Ma
- Work current<=90Ma
- Supporting windows 98SE/ME/2K/XP/2000/ MAS OS/ LINUX
- Real time recording in AVI video format
- Color video and audio let you clearly see & hear
More important is the time and date on the video.
- Internal memory:4 GB

- Voice recording: Yes
- Features Continued:**

- Internal memory: Yes
- Recording mode :continuous recording until memory is full or manually off
- Adaptor type: USB adaptor charging cable
- Battery type : Lithium-ion
- Memory: more than 4 hours (4GB)
- Built-in high volume lithium battery can work 1 hour continuously
- Standard USB 2.0 port no need drive and power
- Read speed/Write speed: 900K/700K a second
- Internal Battery: Lithium-Ion

Instructions:

Charging

When charging the battery, the light will flash on the pen. Once the device is fully charged, the light will stop flashing and remain solid.

Starting the Pen Recorder

Step 1:

Lightly press the switch at the top of the pen and the yellow power light will illuminate. After several seconds, the light will turn blue. The blue light indicates the pen is in the “recording” mode.

Step 2:

Lightly pressing the switch again and holding down the button for three (3) seconds will begin to save data and then turn off. If the light is yellow, this means that the pen DVR is in a sleep mode and is not recording or shut down. The light will need to be off to indicate the device has been successfully shut down.

Step 3:

If you need to record again, lightly press the switch once more and hold down for three (3) seconds and wait for the light to turn blue.

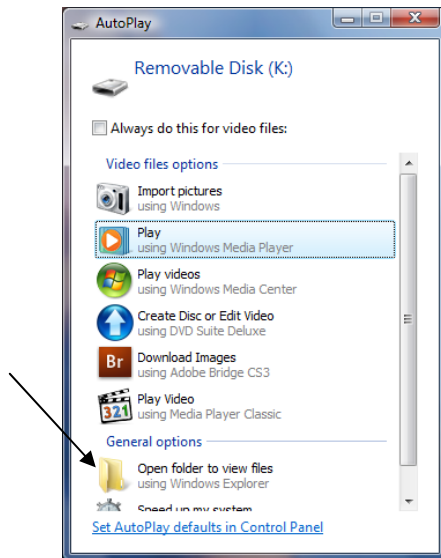
Step 4:

It will turn off itself when the battery has been used up. And will save the recorded files before automatically shutting down.

Downloading

Step 1:

Open pen to expose the USB plug and insert pen into the computer's USB port. Wait for the PC to recognize the device and the following window will appear. (K:) drive as shown below may be different on your PC.

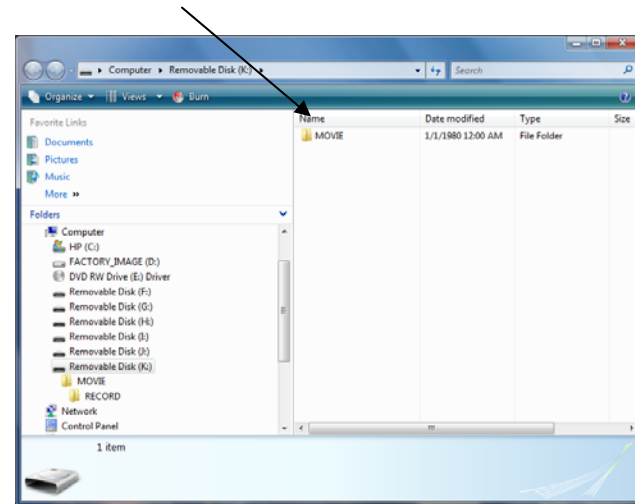


Step 2:

Select "Open folder to view files"

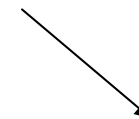
Step 3:

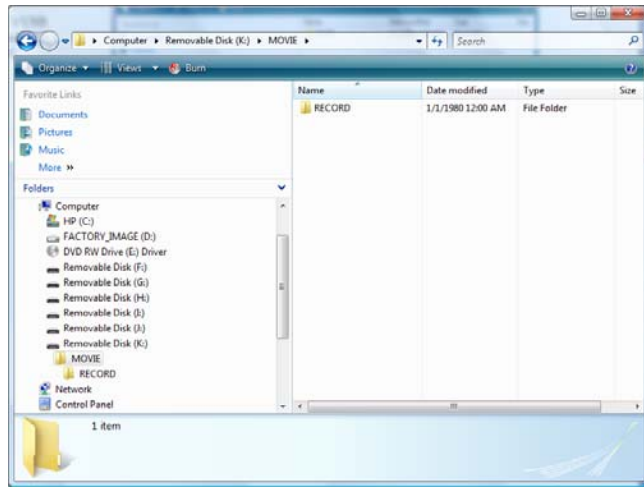
"MOVIE" folder will appear in this window.



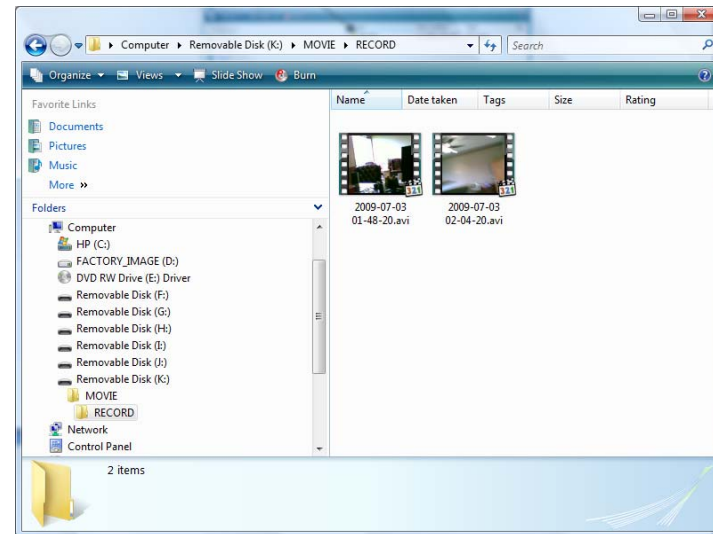
Step 4:

Once you double click on "MOVIE", The "RECORD" Subfolder appears





Step 5:
Once you double click on “RECORD”, the movies recorded will appear.



Step 6:

You can now watch the movies from this screen. **IMPORTANT!** You are viewing the location of the stored movies on the memory of the pen. If you wish to save these to your PC, you will need to drag them onto your desktop or into a folder of your choice. This will give you additional space on the pen and provide more permanent storage.

